



PRO-Kinetic Cobalt Chromium Coronary Stent System

All-Comers «Real World» Registry*

All-Comers «Real World» Registry

Number of patients	254
Objective	Analyse the clinical outcomes in unselected patients who received a PRO-Kinetic Stent
Study description	Monocentric, retrospective study of unselected, consecutive patients
Stent	PRO-Kinetic Cobalt Chromium Coronary Stent System
Enrolment dates	January 2006 to March 2007
Principal Investigator	Prof. R. Kornowski (Rabin Medical Center, Israel)

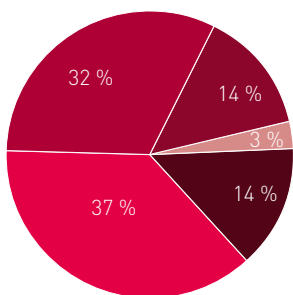
Baseline Demographics Patients = 254

Age (yrs)	66.2 ± 11.6	[30-95]
Men	186	73.2 %
Smoking	58	22.8 %
Diabetes mellitus	114	44.8 %
Insulin dependent DM	25	9.8 %
Hypertension	187	73.6 %
Hypercholesterolemia	186	73.2 %
Renal failure (Creat. > 1.5 mg/dl)	45	17.7 %

Clinical Parameters Patients = 254

Prior angioplasty	107	42.1 %
Prior CABG	42	16.5 %
Acute Coronary Syndrome	124	48.8 %
Total MI	196	77.2 %
STEMI (0 - 6 hours)	15	5.9 %
MI (6 - 24 hours)	39	15.4 %
MI (1 - 7 days)	75	29.5 %
Remote MI (> 7 days)	67	26.4 %
Moderate & Severe LVEF dysfunction	64	25.2 %

ACC/AHA Lesion Classification

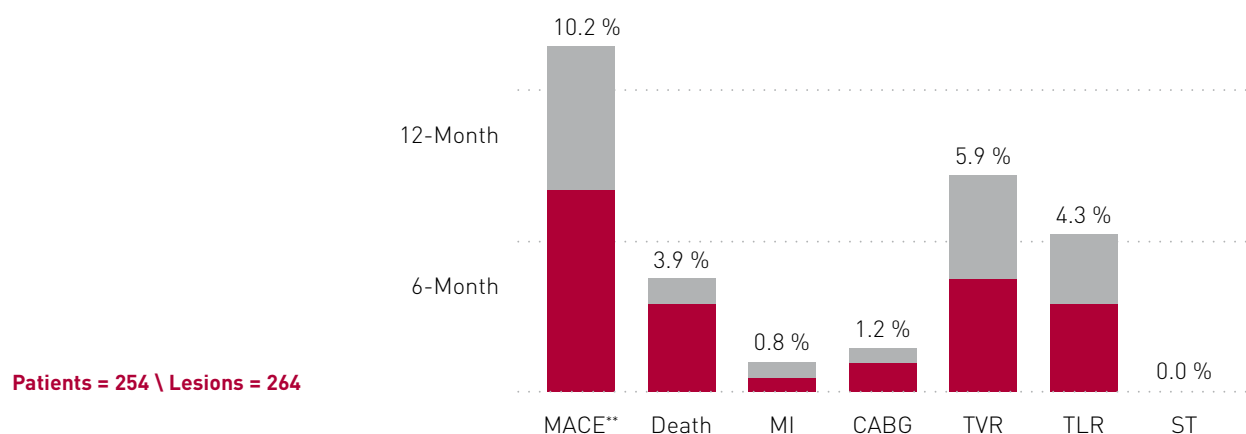


Procedural Characteristics

Lesion length (mm)	10.4 ± 5.3	
Total stent length per lesion (mm)	18.8 ± 8.9	
Mean stent diameter (mm)	2.9 ± 0.6	
	Pre-procedure	Post-procedure
Reference vessel diameter (mm)	2.8 ± 0.7	3.1 ± 0.7
Minimal luminal diameter (mm)	0.52 ± 0.42	2.8 ± 0.7
Diameter stenosis (%)	87 ± 11.6	8 ± 5

* Oral presentation Prof. Ran Kornowski, EuroPCR 2008.

1-Year Outcomes



6- and 12-Month Outcomes		Patients = 254 / Lesions = 264			
	6-Month		12-Month		
MACE**	14	5.5 %	26	10.2 %	
Death	6	2.4 %	10	3.9 %	
Myocardial Infarction	1	0.4 %	2	0.8 %	
CABG	2	0.8 %	3	1.2 %	
TVR (per patient)	8	3.1 %	15	5.9 %	
TLR (per patient)	6	2.4 %	11	4.3 %	
TVR (per lesion)	9	3.4 %	16	6.1 %	
TLR (per lesion)	7	2.7 %	12	4.5 %	
Stent Thrombosis	0	0 %	0	0 %	

Diabetic Sub-analysis Outcome		Patients = 114 / Lesions = 119			
	6-Month		12-Month		
MACE**	11	9.6 %	16	14.0 %	
Death	5	4.4 %	6	5.3 %	
Myocardial Infarction	1	0.9 %	2	1.8 %	
TVR (per patient)	6	5.3 %	10	8.8 %	
TLR (per patient)	5	4.4 %	7	6.1 %	
Stent Thrombosis	0	0 %	0	0 %	

** MACE – Hierarchical and defined as any death, any MI, TVR (PCI or CABG)
One patient had both TVR and CABG

BIOTRONIK AG
Ackerstrasse 6
8180 Bülach · Switzerland
Tel +41 (0)44 8645111
Fax +41 (0)44 8645005
info.vi@biotronik.com
www.biotronik.com/vi